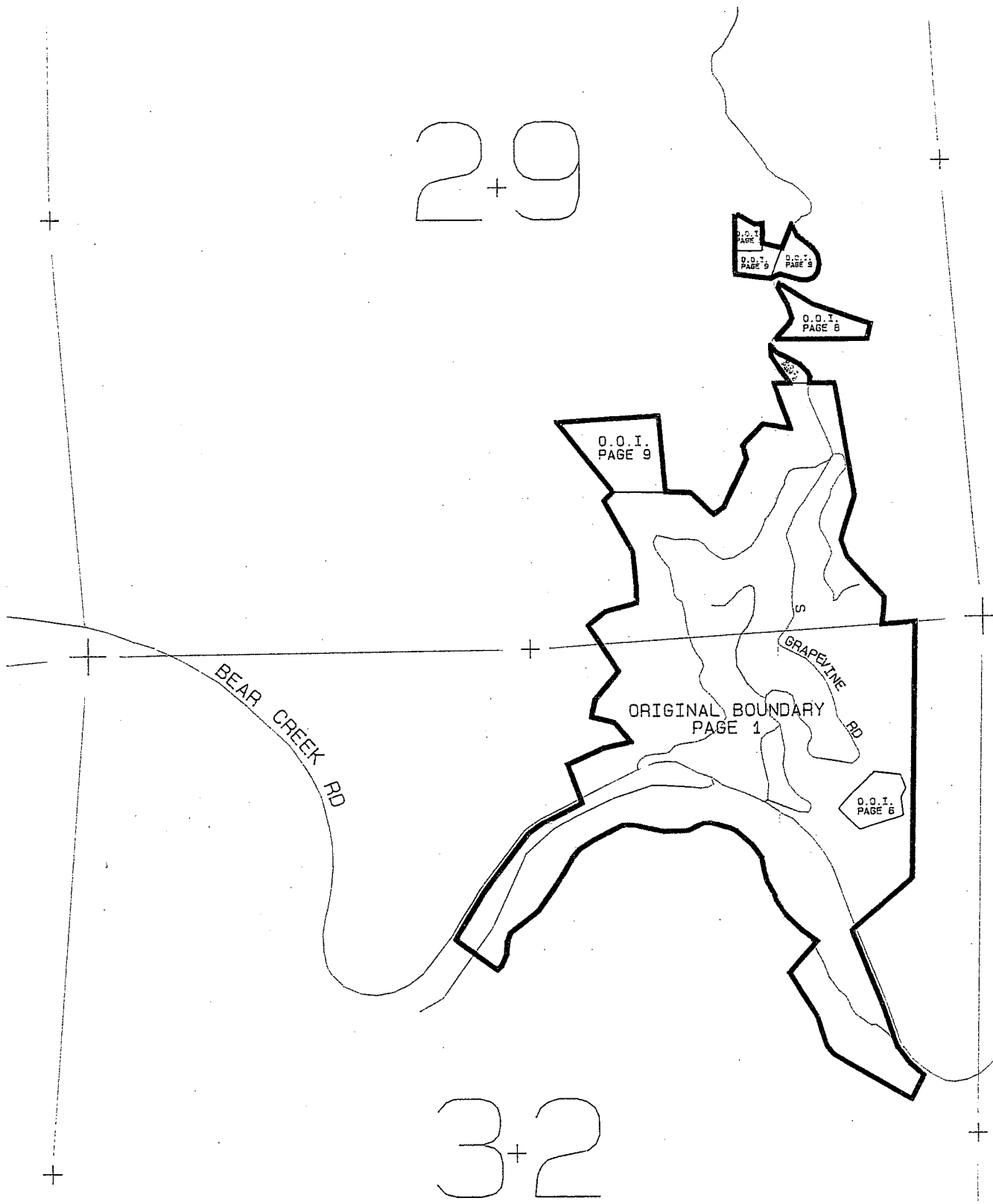
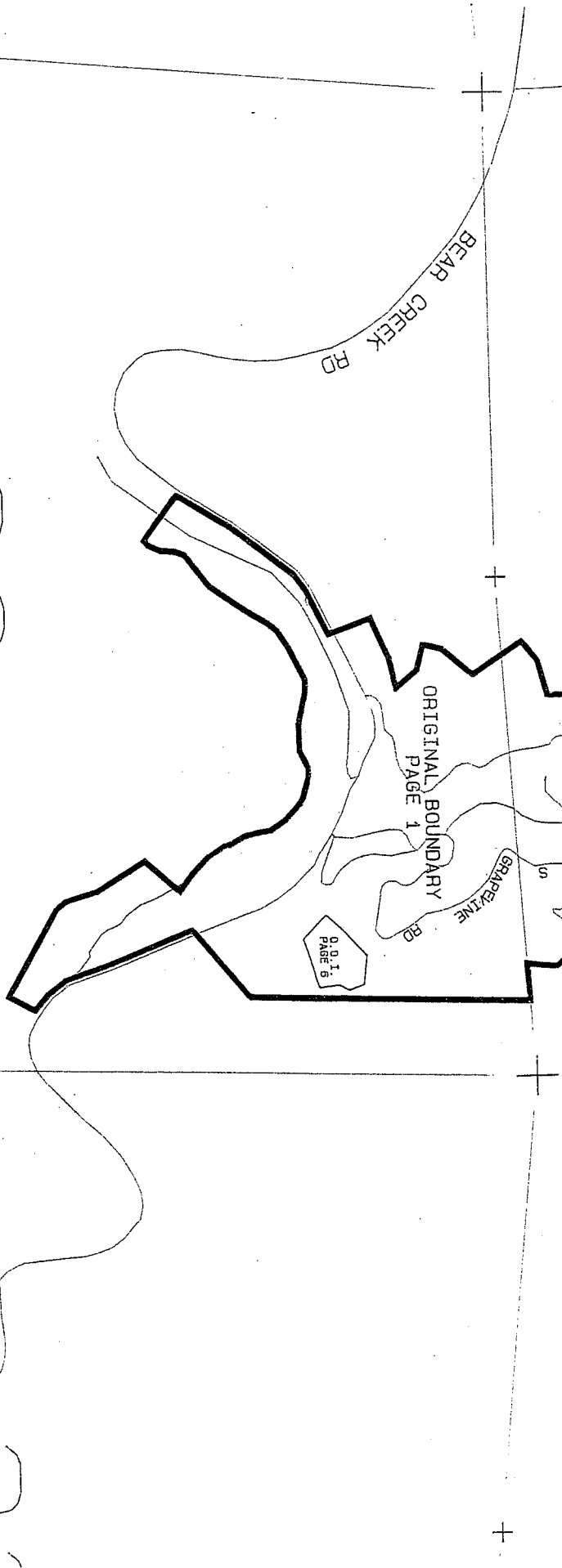


2+9

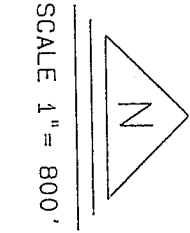


3+2

IDLEDALE WATER & SANITATION  
DISTRICT  
T4S R70W



IDLEDALE WATER & SANITATION  
 DISTRICT  
 T4S R70W



SCALE 1" = 800'

MAPPING DEPARTMENT  
 JEFFERSON COUNTY  
 COLORADO

DATE OF LAST COURT ORDER: JULY 31, 1989  
 DISTRICT APPROVAL DATE: AUGUST 23, 1993

LEGEND

- 0.0.1. (INCLUSION)
- 0.0.E. (EXCLUSION)
- DISTRICT BOUNDARY

+